

Castle Rock Hormone Health Peptides



GLPs

A GLP is a Glucagon-Like Peptide. GLPs are administered via subcutaneous injection. GLPs are primarily used for blood sugar control, which is highly beneficial to individuals with diabetes. GLPs are also used for weight management and obesity. GLP injections are effective due to the synthetic versions of GLP-1 — a naturally occurring hormone in the body.

R (10)

TISSUE REGENERATION
ANTI-INFLAMMATORY
NEUROLOGICAL HEALTH

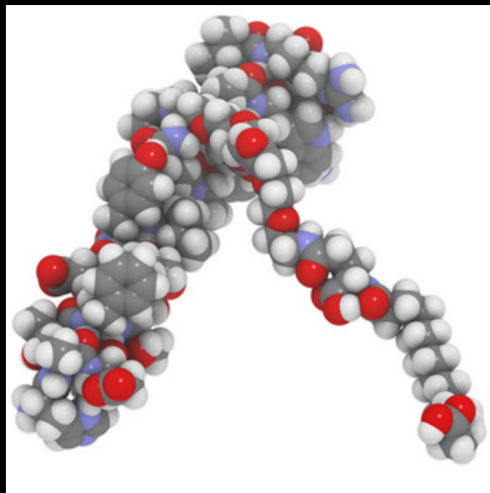
Retatrutide mimics the function of certain natural peptides to interact with specific cellular receptors for tissue repair/growth, reduces inflammation, and influences cellular processes.



S (5)

BLOOD SUGAR
CONTROL
WEIGHT MANAGEMENT
CARDIOVASCULAR
BENEFITS

Semaglutide mimics the effects of GLP-1 by binding to the same receptors in the pancreas and other tissues to lower blood sugar, improve glycemic control, and promote weight loss.



S (20)

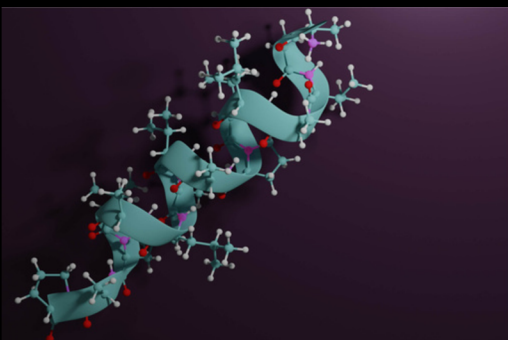
BLOOD SUGAR
CONTROL
WEIGHT MANAGEMENT
CARDIOVASCULAR
BENEFITS

Semaglutide mimics the effects of GLP-1 by binding to the same receptors in the pancreas and other tissues to lower blood sugar, improve glycemic control, and promote weight loss.

T (10)

WEIGHT LOSS
BLOOD SUGAR CONTROL
CARDIOVASCULAR
BENEFITS
ENHANCED INSULIN
SENSITIVITY

Tirzepatide combines both the Semaglutide properties along with a GLP receptor that helps the body control blood sugar levels and helps you feel fuller.



T (50)

WEIGHT LOSS
BLOOD SUGAR CONTROL
CARDIOVASCULAR
BENEFITS
ENHANCED INSULIN
SENSITIVITY

Tirzepatide combines both the Semaglutide properties along with a GLP receptor that helps the body control blood sugar levels and helps you feel fuller.

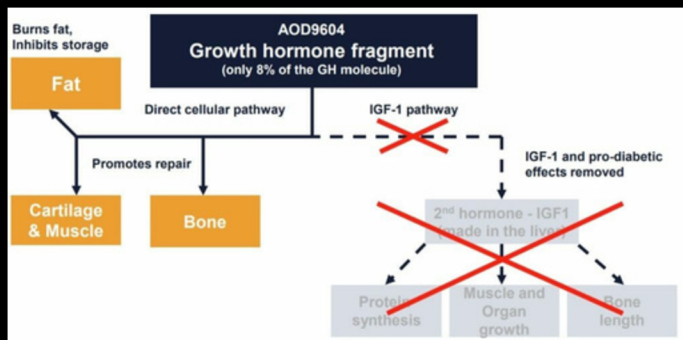
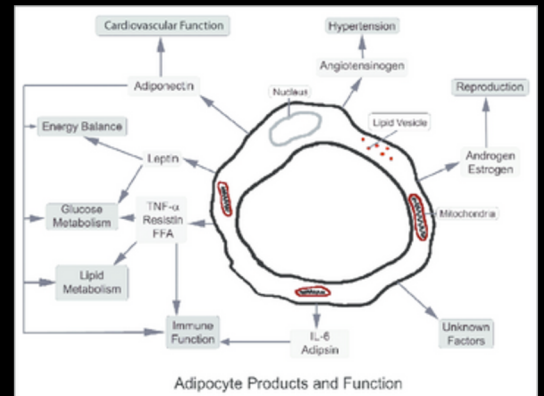
Peptides

Peptides are small chains of amino acids — the building blocks of proteins. Peptides act as signaling molecules and regulators of natural, biological processes. Peptides have many functions, including: hormone regulation, immune response, cell communication, and so much more! Peptides influence natural, biological processes such as growth, metabolism, pain perception, wound healing, inflammation, and so many others.

Adipotide-FTP

FAT REDUCTION
METABOLIC HEALTH
BODY COMPOSITION

Adipotide-FTP is designed to target and reduce white adipose tissue for fat loss, which improves insulin sensitivity and metabolic function. It preserves muscle mass for a more toned and leaner physique.



AOD-9604

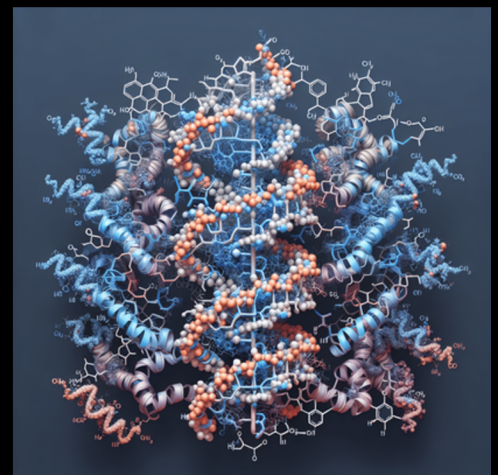
WEIGHT LOSS
FAT BURNING
CARTILAGE BENEFITS
MUSCLE RECOVERY

AOD-9604 mimics the fat burning properties of HGH for weight loss and obesity management (without adverse effects to insulin sensitivity). It enhances cartilage repair and muscle recovery.

BPC-157

TISSUE REPAIR
GUT HEALTH
MUSCLE RECOVERY & GROWTH
NERVE HEALTH
ANTI-INFLAMMATORY
IMMUNE SUPPORT

BPC-157 promotes nitric oxide for wound healing and blood flow, stimulates repair processes, inhibits inflammatory responses, and activates tissue repair.



Peptides

CJC no Dac

GROWTH HORMONE SECRETION

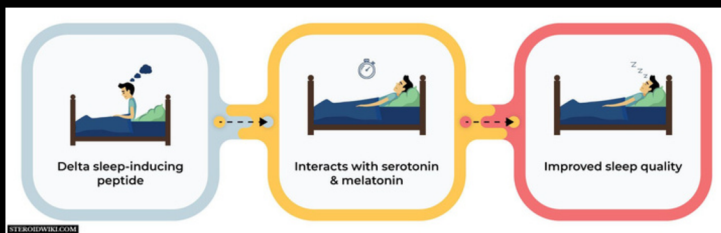
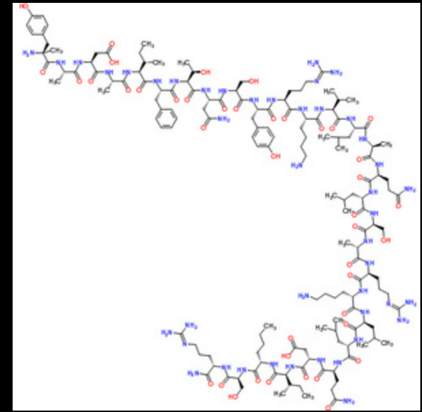
BONE HEALTH

MUSCLE GROWTH

WEIGHT LOSS

SLEEP & RECOVERY

CJC is designed to increase the secretion of growth hormone (GH) from the pituitary gland and binds to and activates its receptor, leading to an increase in GH and IGF-1.



Epithalon

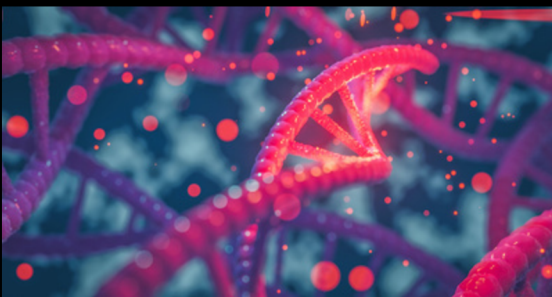
ANTI-AGING

IMPROVED SLEEP

SKIN HEALTH

COGNITIVE FUNCTION

Epithalon stimulates the production of telomerase, which promotes the maintenance or elongation of telomeres. This potentially counteracts the aging process at a cellular level.



Gonadorelin

HORMONE REGULATION

FERTILITY SUPPORT

Gonadorelin mimics the body's natural gonadotropin-releasing hormone (GnRH), stimulating the release of LH and FSH. This regulates reproductive functions (ovulation in women and testosterone production in men).

DSIP

SLEEP IMPROVEMENT

STRESS REDUCTION

ENDOCRINE HEALTH

NEUROPROTECTIVE

DSIP influences neurophysiological activities, modifies neurotransmitter levels in the brain, and impacts circadian and locomotor patterns for sleep improvement and reduced stress.



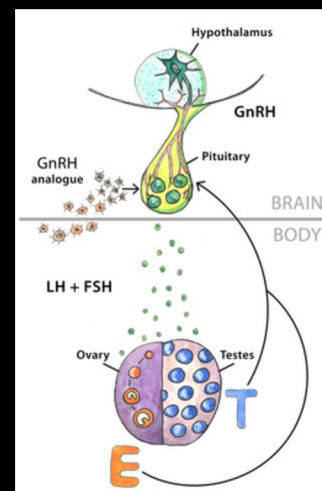
GHK-CU

SKIN REJUVENATION

WOUND HEALING

HAIR GROWTH

GHK-CU enhances the body's natural wound healing processes by promoting collagen production, angiogenesis (formation of new blood vessels), and tissue remodeling.



Peptides

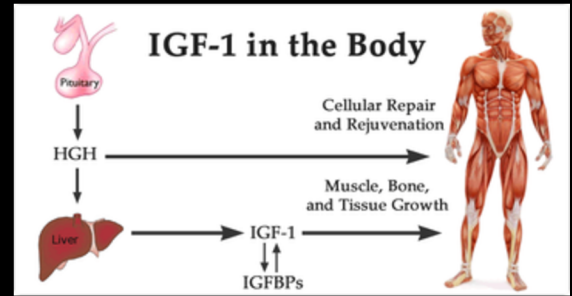
IGF-1 LR3

MUSCLE DEVELOPMENT

FAT BURNING

PROTEIN SYNTHESIS

IGF-1 LR3 works by binding to the IGF-1 receptor. It stimulates cellular growth, promotes the uptake of amino acids, and aids in muscle recovery and regeneration, leading to improved metabolic health.



Ipamorelin

MUSCLE GROWTH & REPAIR

FAT LOSS & METABOLIC HEALTH

IMPROVED SLEEP & RECOVERY

Ipamorelin binds to specific receptors on the surface of pituitary gland cells, stimulating the release of growth hormone in a pulsatile and controlled manner.

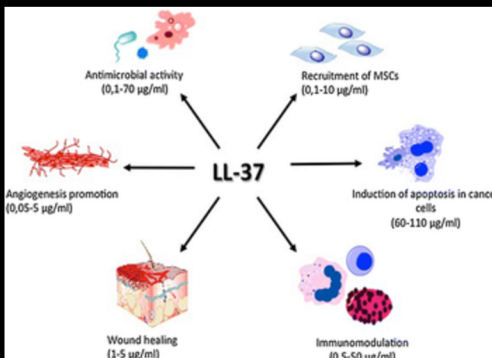
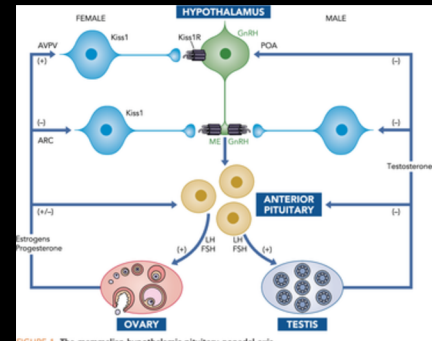
Kisspeptin

REPRODUCTIVE HORMONE HEALTH

FERTILITY AID

METABOLIC HEALTH

Kisspeptin binds to the GPR54, triggering the release of GnRH. This signals the pituitary gland to release LH and FSH, which are vital for sexual maturation and fertility.



LL-37

SKIN HEALTH

ANTI-INFLAMMATORY

IMMUNE SYSTEM BOOST

LL-37 offers broad-spectrum antimicrobial activity against bacteria, fungi, and viruses. It aids in wound healing, inflammation, cell proliferation and migration, and cytokine production.

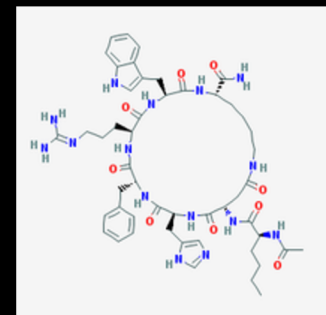
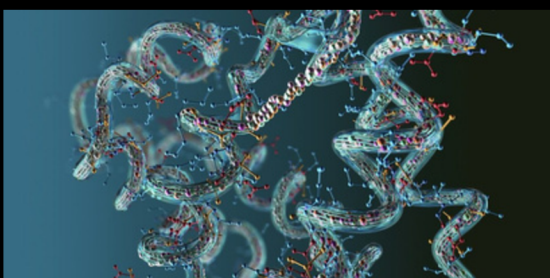
Melanotan

ENHANCED SKIN PIGMENTATION

UV PROTECTION

SKIN HEALTH

Melanotan safely boosts your skin's natural pigmentation and protects against UV damage, resulting in lasting results with minimal sun exposure.



MOTS-C

METABOLIC HEALTH

INSULIN SENSITIVITY

FAT UTILIZATION

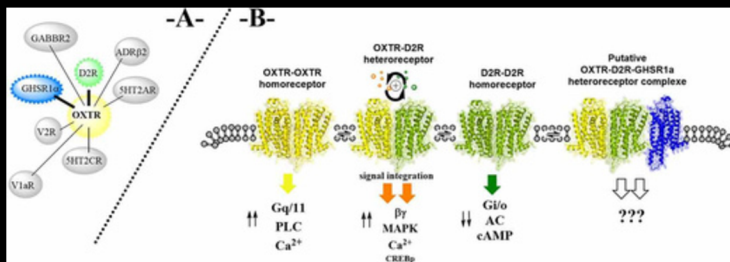
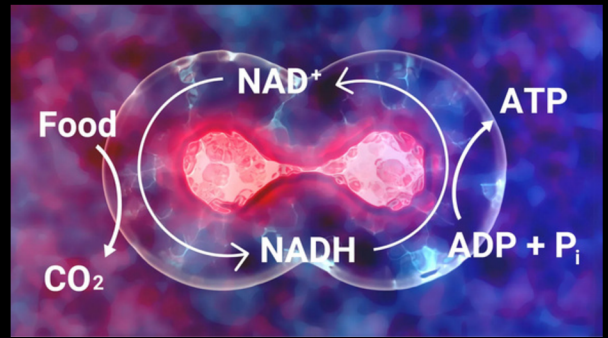
MOTS-C activates AMPK in energy homeostasis, which facilitates the uptake and utilization of glucose and fatty acids. It can help the body efficiently switch between burning carbohydrates and fats.

Peptides

NAD⁺

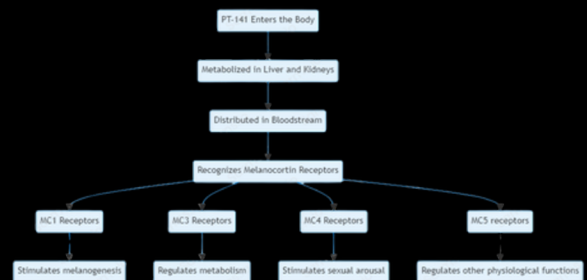
ANTI-AGING
CELLULAR HEALTH
METABOLIC HEALTH
IMMUNE SYSTEM
ANTIOXIDANT DEFENSE

NAD⁺ plays a critical role in metabolic reactions, serving as a coenzyme for enzymes involved in processes like glycolysis, the citric acid cycle, and DNA repair.



PT-141

SEXUAL HEALTH
SEXUAL DESIRE, AROUSAL, AND DYSFUNCTION
PT-141 works by activating melanocortin receptors in the brain, specifically MC4R and MC3R. This activation leads to increased sexual desire and arousal, which improves sexual dysfunction.



Semax

COGNITIVE HEALTH
BRAIN HEALTH
EMOTIONAL HEALTH

Semax modulates the release & activity of key neurotransmitters (i.e. dopamine, serotonin, & norepinephrine) for enhanced cognitive function, memory, and attention. It protects neurons for brain health.

Oxytocin

SEXUAL HEALTH
STRESS REDUCTION
EMOTIONAL BONDING

Oxytocin works by binding to specific receptors in the brain and body (i.e. contractions during childbirth and milk release during breastfeeding). It influences brain regions in human social behavior.

Selank

COGNITIVE HEALTH
ANXIETY & STRESS RELIEF
IMMUNE SYSTEM MODULATION

Selank modulates the levels of neurotransmitters in the brain (i.e. serotonin and dopamine) for mood regulation, reducing anxiety, and improving cognition. It boosts immune responses.



Peptides

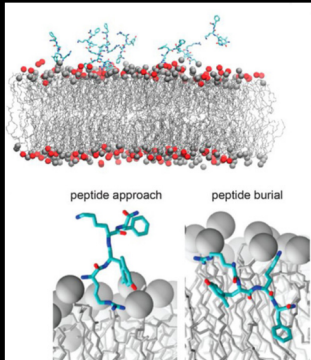
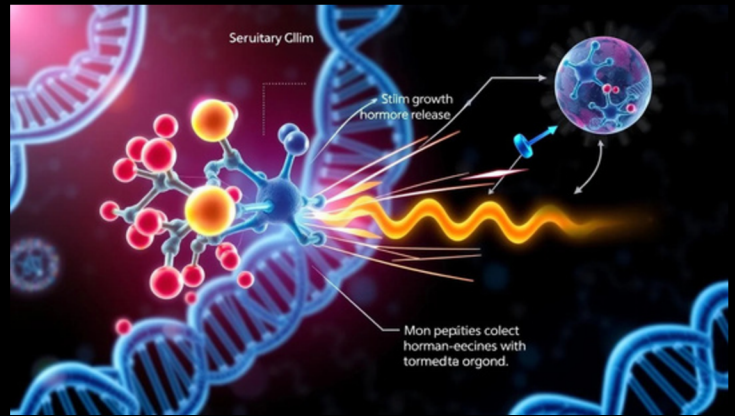
Sermorelin

IMPROVED SLEEP

ANTI-AGING

ATHLETIC PERFORMANCE

Sermorelin acts like your pituitary's maestro, encouraging it to produce and release the endogenous growth hormone, which then exerts its effects on growth and metabolism throughout the body.



SS-31

MITOCHONDRIAL PROTECTION

ANTI-AGING

MUSCLE & TISSUE HEALTH

SS-31 protects mitochondria from oxidative stress damage by binding directly to cardiolipin, a lipid unique to mitochondria. SS-31 helps cells to recover and operate more effectively.

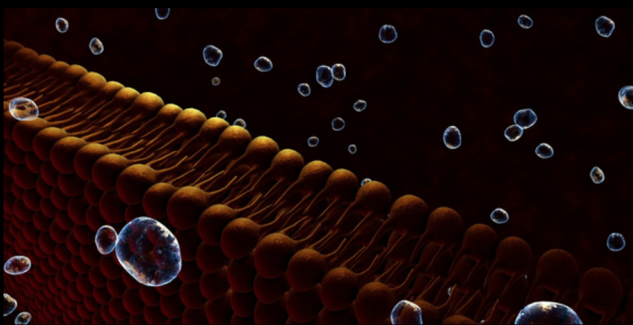
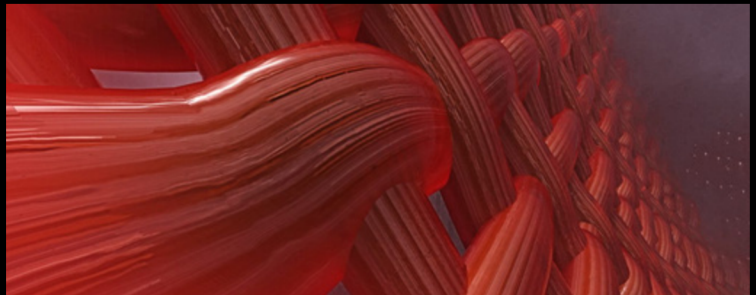
TB-500

TISSUE HEALING

ANTI-INFLAMMATORY

MUSCLE RECOVERY

TB-500 exerts its regenerative effects by promoting cell migration, proliferation, and differentiation. These processes are essential for tissue healing and health as well as reducing inflammation.



Tesamorelin

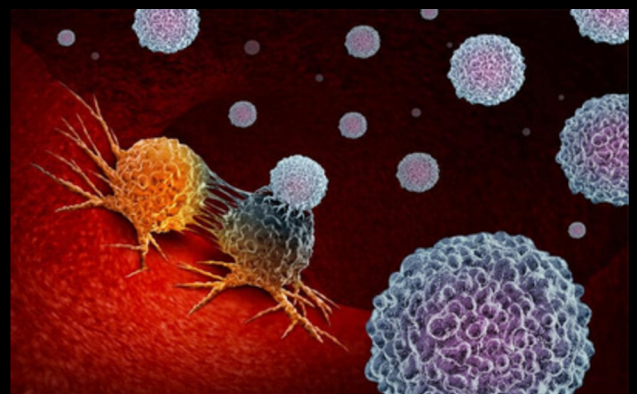
IMPROVED SLEEP

ANTI-AGING

INSULIN SENSITIVITY

BODY COMPOSITION

Tesamorelin modulates the production of growth hormone in the body, which aids various physiological processes (i.e. growth, metabolism, & tissue repair) and HIV-associated lipodystrophy.



Thymosin Alpha-1

IMMUNE SYSTEM SUPPORT

ANTI-INFLAMMATORY

ANTIVIRAL

Thymosin Alpha-1 enhances the function of T-cells & natural killer cells, improving immune surveillance, & helping in the destruction of infected or cancerous cells.

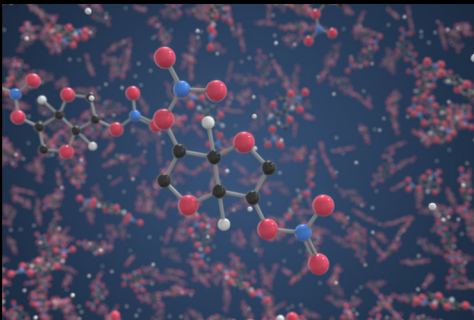
Peptide Blends

Peptide blends are when two or more peptides are compounded together for more benefits in one! Like peptides, peptide blends are still a small chain of amino acids that have multiple functions. Peptide blends have the functions of more than just one peptide alone.

BPC-157 + TB-500

TISSUE HEALTH
ANTI-INFLAMMATORY
GUT HEALTH
MUSCLE RECOVERY & GROWTH
NERVE HEALTH
IMMUNE SUPPORT

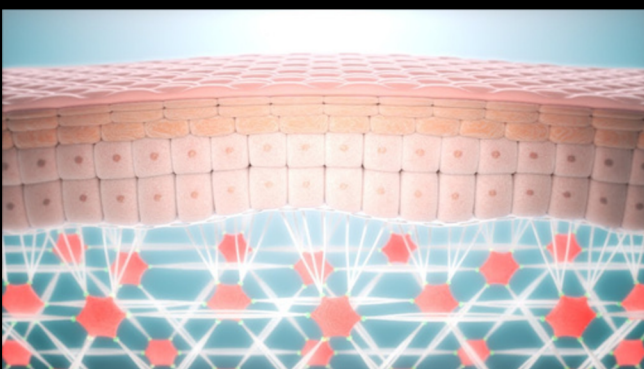
This peptide blend combines the promotion of nitric oxide of BPC-157 and cell migration, proliferation, and differentiation of TB-500 for recovery.



DSIP + Selank

COGNITIVE HEALTH
ANXIETY & STRESS RELIEF
IMMUNE SYSTEM MODULATION
SLEEP IMPROVEMENT
ENDOCRINE HEALTH
NEUROPROTECTIVE

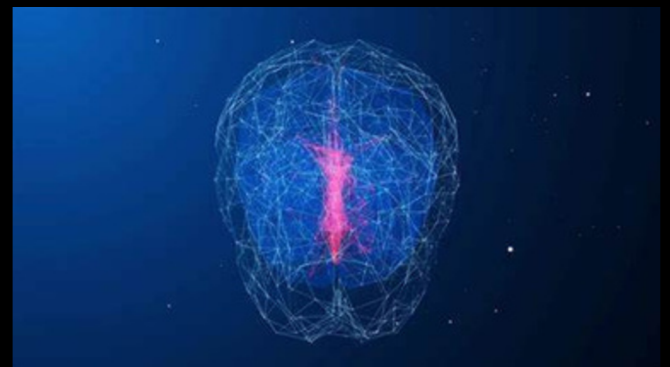
This peptide blend combines the influence of neurotransmitter levels in the brain from DSIP & Selank for improved sleep and mood.



CJC-1295 + Ipamorelin

MUSCLE GROWTH & REPAIR
FAT LOSS & METABOLIC HEALTH
IMPROVED SLEEP & RECOVERY
GROWTH HORMONE SECRETION
BONE HEALTH

This peptide blend combines the promotion of GH secretion of both, CJC-1295 & Ipamorelin, for optimal recovery, sleep, & weight loss.



GHK-CU + Epithalon

ANTI-AGING
IMPROVED SLEEP
SKIN HEALTH
COGNITIVE FUNCTION
WOUND HEALING
HAIR GROWTH

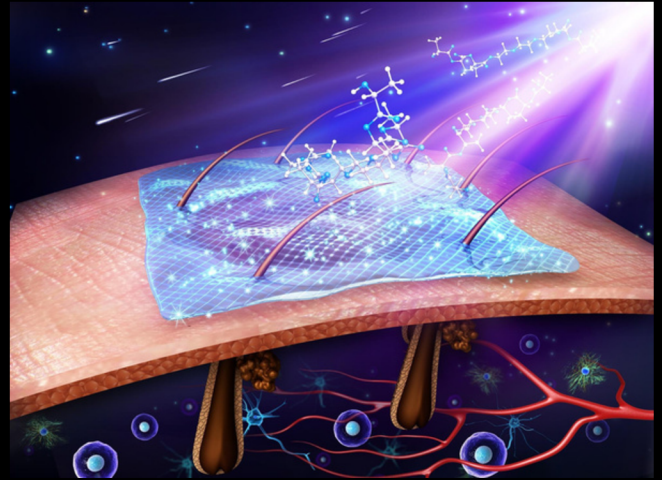
This peptide blend combines the collagen production from GHK-CU and anti-aging process from Epithalon for hair, skin, & cellular health.

Peptide Blends

GHK-CU + Epithalon + MOTS-C

METABOLIC HEALTH
FAT UTILIZATION
ANTI-AGING
IMPROVED SLEEP
SKIN HEALTH
COGNITIVE FUNCTION
WOUND HEALING
HAIR GROWTH

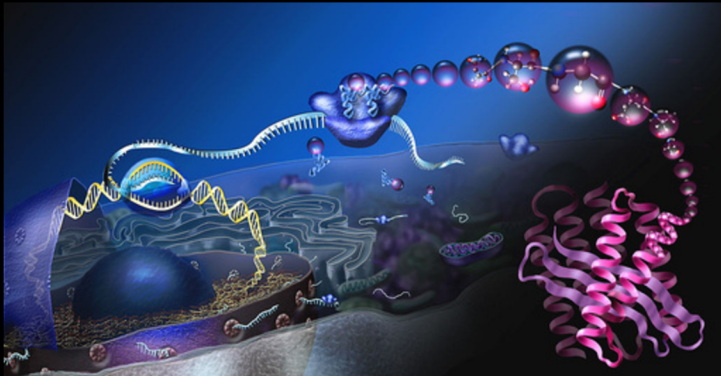
This peptide blend combines GHK-CU's collagen production, MOTS-C's AMPK activation, & Epithalon's telomerase production.



IGF-1 LR3 + MOTS-C

METABOLIC HEALTH
INSULIN SENSITIVITY
FAT UTILIZATION
MUSCLE DEVELOPMENT
PROTEIN SYNTHESIS

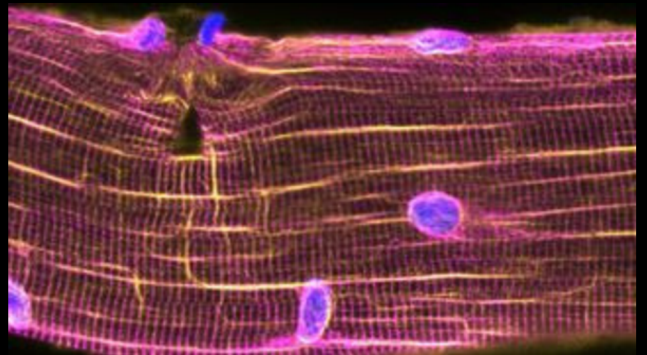
This peptide blend combines the promotion of the uptake of amino acids (IGF-1 LR3) & utilization of glucose and fatty acids (MOTS) for metabolic health.



Ipamorelin + Sermorelin

ANTI-AGING
ATHLETIC PERFORMANCE
MUSCLE GROWTH & REPAIR
FAT LOSS & METABOLIC HEALTH
IMPROVED SLEEP & RECOVERY

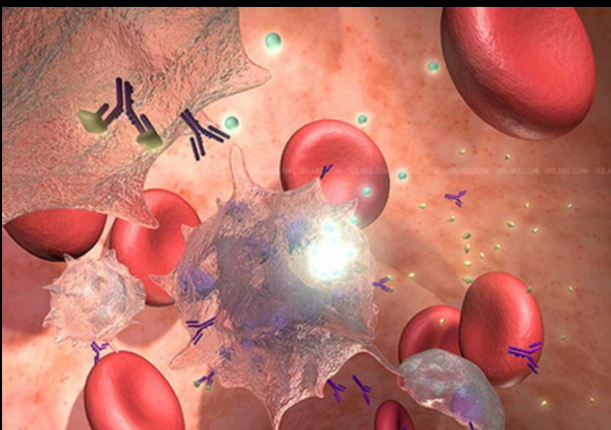
This peptide blend stimulates the pituitary gland for the release of GH (Ipamorelin & Sermorelin) for optimal sleep, recovery, & performance.



TB-500 + BPC-157 + GHK-CU + KPV

TISSUE HEALTH
ANTI-INFLAMMATORY
GUT HEALTH
MUSCLE RECOVERY
NERVE HEALTH
IMMUNE SUPPORT
SKIN HEALTH
HAIR GROWTH

This peptide blend combines the BPC-157's nitric oxide aid, TB-500's cell properties, GHK-CU's collagen aid, & KPV's anti-inflammatory aid.



Castle Rock Hormone Health



**PLEASE CONTACT US
FOR MORE
INFORMATION**

P: 404-900-7378
E: atlanta@crhormonehealth.com
www.crhormonehealth.com